

Correlations

		PERSEPSI	Y_PERILAKU_ APD_BIDAN
PERSEPSI	Pearson Correlation	1	,461**
	Sig. (2-tailed)		,002
	N	42	42
Y_PERILAKU_APD_BIDAN	Pearson Correlation	,461**	1
	Sig. (2-tailed)	,002	
	N	42	42

** . Correlation is significant at the 0.01 level (2-tailed).

Correlations

		Y_PERILAKU_ APD_BIDAN	SIKAP
Y_PERILAKU_APD_BIDAN	Pearson Correlation	1	,430**
	Sig. (2-tailed)		,004
	N	42	42
SIKAP	Pearson Correlation	,430**	1
	Sig. (2-tailed)	,004	
	N	42	42

** . Correlation is significant at the 0.01 level (2-tailed).

Correlations

		Y_PERILAKU_ APD_BIDAN	PENGETAHUA N
Y_PERILAKU_APD_BIDAN	Pearson Correlation	1	,467**
	Sig. (2-tailed)		,002
	N	42	42
PENGETAHUAN	Pearson Correlation	,467**	1
	Sig. (2-tailed)	,002	
	N	42	42

** . Correlation is significant at the 0.01 level (2-tailed).

Correlations

		Y_PERILAKU_ APD_BIDAN	HAMBATAN_A PD
Y_PERILAKU_APD_BIDAN	Pearson Correlation	1	-,304
	Sig. (2-tailed)		,051
	N	42	42
HAMBATAN_APD	Pearson Correlation	-,304	1
	Sig. (2-tailed)	,051	
	N	42	42

Correlations

		Y_PERILAKU_ APD_BIDAN	PENGAWASAN _SANKSI
Y_PERILAKU_APD_BIDAN	Pearson Correlation	1	,692**
	Sig. (2-tailed)		,000
	N	42	42
PENGAWASAN_SANKSI	Pearson Correlation	,692**	1
	Sig. (2-tailed)	,000	
	N	42	42

** . Correlation is significant at the 0.01 level (2-tailed).

Correlations

		Y_PERILAKU_ APD_BIDAN	FASILITAS
Y_PERILAKU_APD_BIDAN	Pearson Correlation	1	,622**
	Sig. (2-tailed)		,000
	N	42	42
FASILITAS	Pearson Correlation	,622**	1
	Sig. (2-tailed)	,000	
	N	42	42

** . Correlation is significant at the 0.01 level (2-tailed).

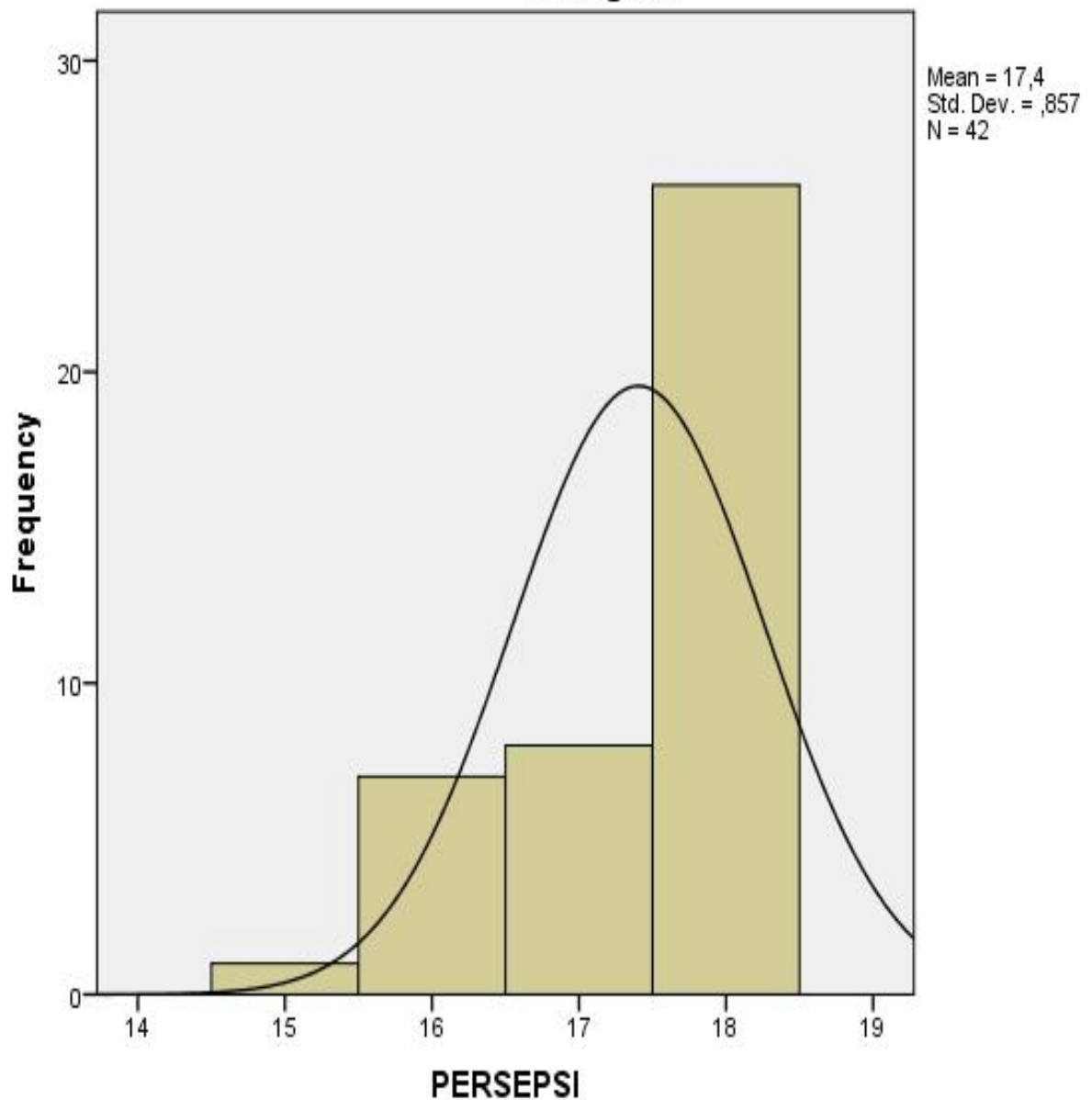
Statistics

PERSEPSI		
N	Valid	42
	Missing	0
Mean		17,40
Median		18,00
Mode		18
Std. Deviation		,857
Minimum		15
Maximum		18

PERSEPSI

	Frequency	Percent	Valid Percent	Cumulative Percent
15	1	2,4	2,4	2,4
16	7	16,7	16,7	19,0
Valid 17	8	19,0	19,0	38,1
18	26	61,9	61,9	100,0
Total	42	100,0	100,0	

Histogram



Statistics

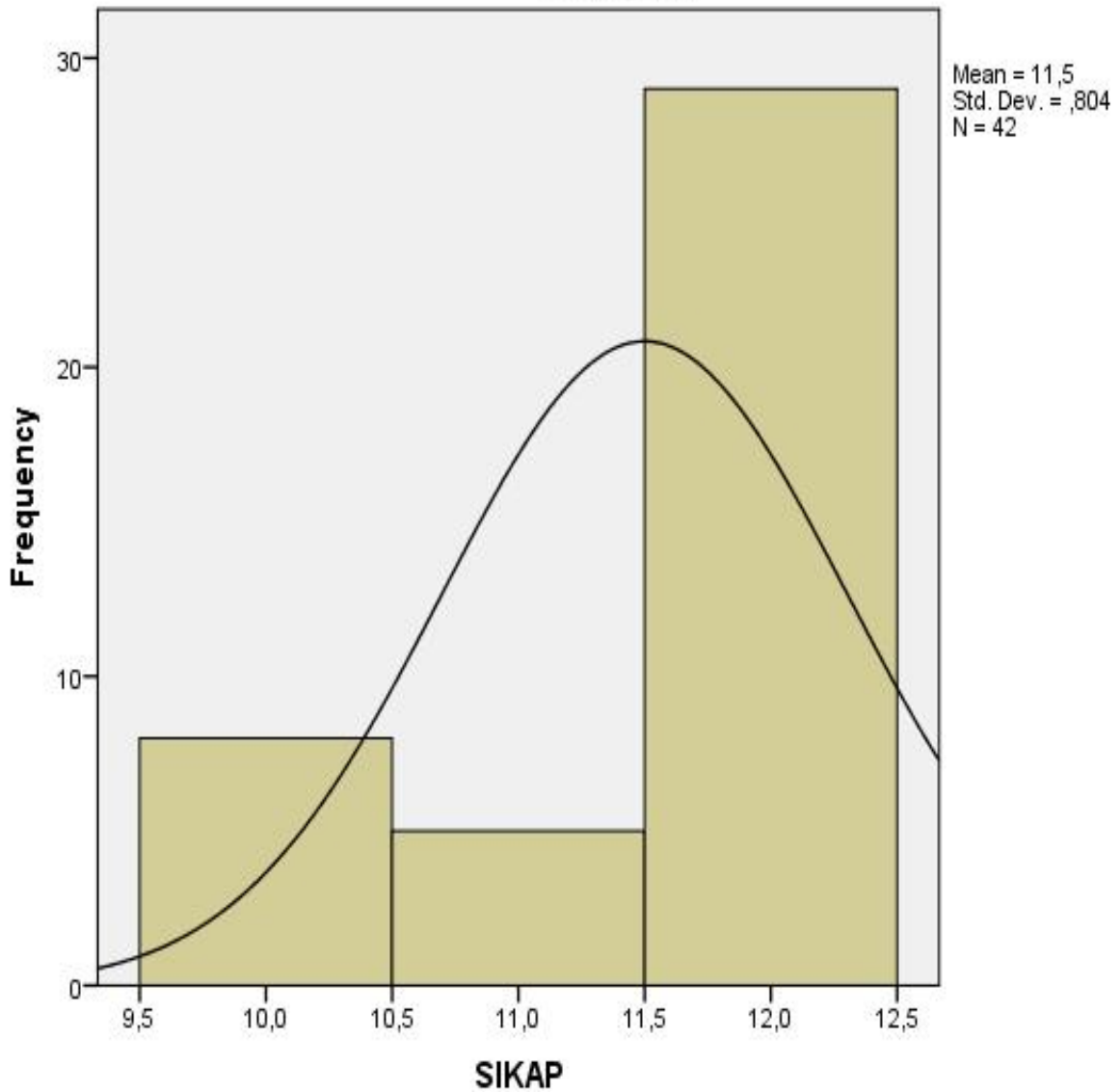
SIKAP

N	Valid	42
	Missing	0
Mean		11,50
Median		12,00
Mode		12
Std. Deviation		,804
Minimum		10
Maximum		12

SIKAP

	Frequency	Percent	Valid Percent	Cumulative Percent
10	8	19,0	19,0	19,0
11	5	11,9	11,9	31,0
12	29	69,0	69,0	100,0
Total	42	100,0	100,0	

Histogram



Statistics

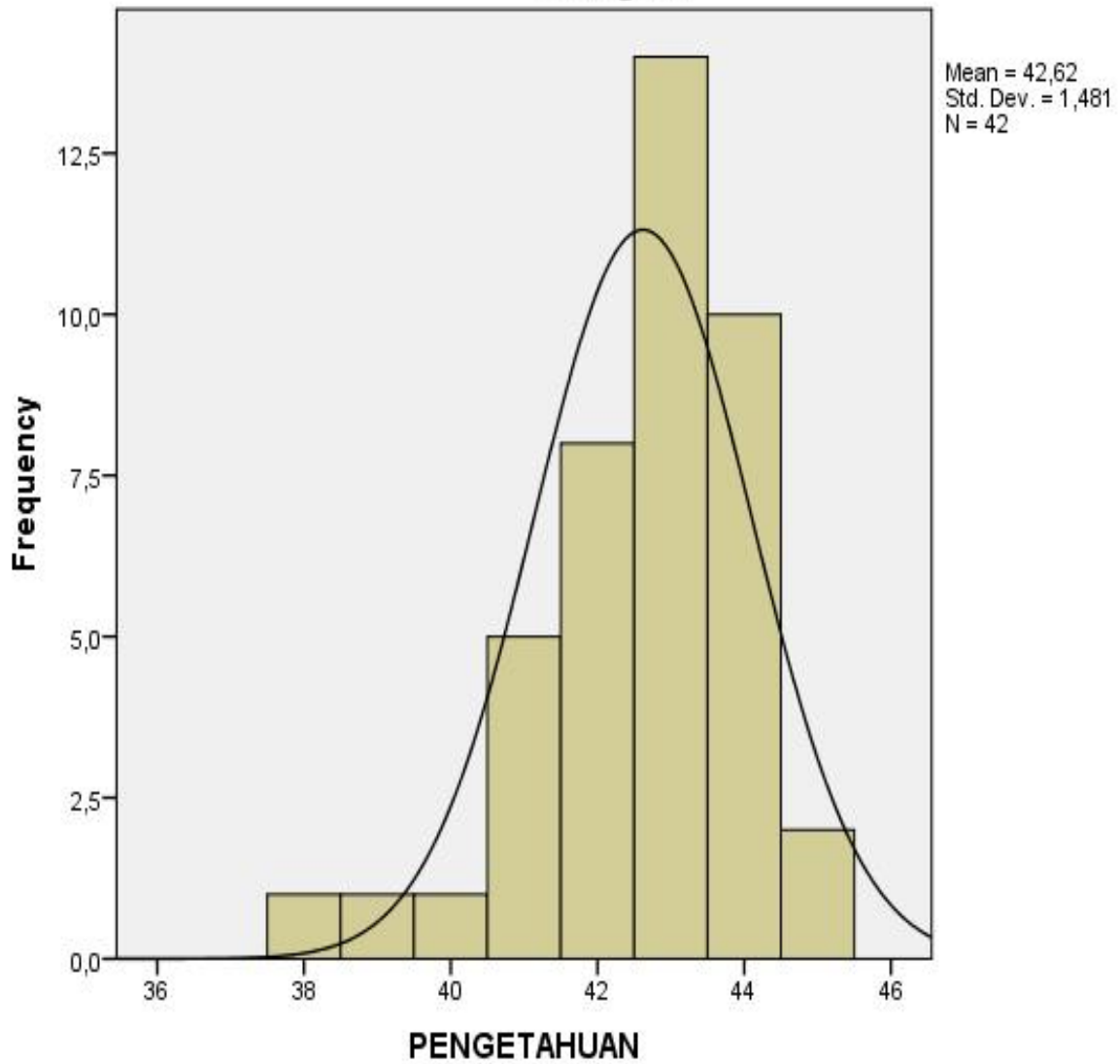
PENGETAHUAN

N	Valid	42
	Missing	0
Mean		42,62
Median		43,00
Mode		43
Std. Deviation		1,481
Minimum		38
Maximum		45

PENGETAHUAN

	Frequency	Percent	Valid Percent	Cumulative Percent
38	1	2,4	2,4	2,4
39	1	2,4	2,4	4,8
40	1	2,4	2,4	7,1
41	5	11,9	11,9	19,0
Valid 42	8	19,0	19,0	38,1
43	14	33,3	33,3	71,4
44	10	23,8	23,8	95,2
45	2	4,8	4,8	100,0
Total	42	100,0	100,0	

Histogram



Statistics

HAMBATAN_APD

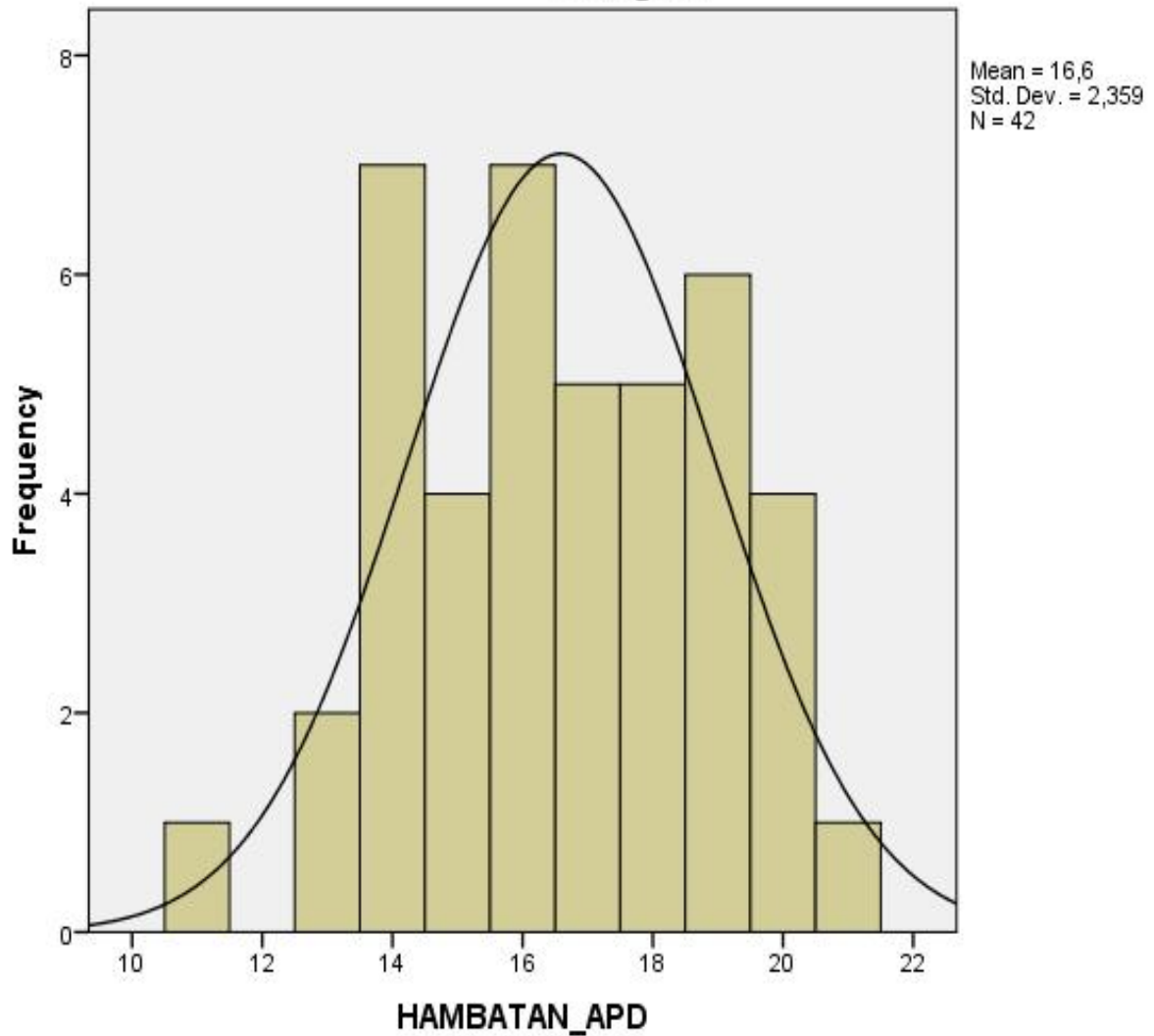
N	Valid	42
	Missing	0
Mean		16,60
Median		16,50
Mode		14 ^a
Std. Deviation		2,359
Minimum		11
Maximum		21

a. Multiple modes exist. The smallest value is shown

HAMBATAN_APD

	Frequency	Percent	Valid Percent	Cumulative Percent
11	1	2,4	2,4	2,4
13	2	4,8	4,8	7,1
14	7	16,7	16,7	23,8
15	4	9,5	9,5	33,3
16	7	16,7	16,7	50,0
Valid 17	5	11,9	11,9	61,9
18	5	11,9	11,9	73,8
19	6	14,3	14,3	88,1
20	4	9,5	9,5	97,6
21	1	2,4	2,4	100,0
Total	42	100,0	100,0	

Histogram



Statistics

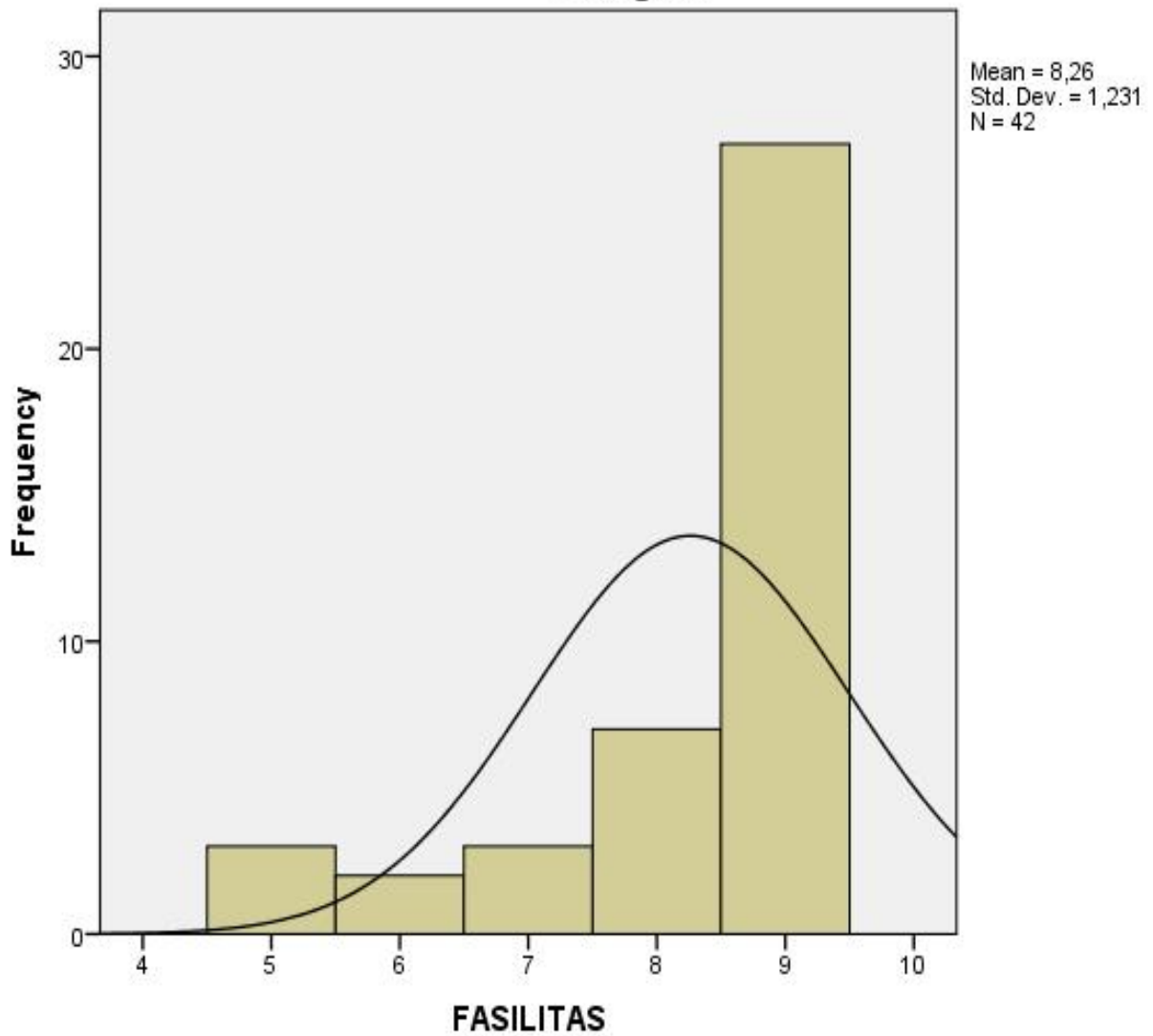
FASILITAS

N	Valid	42
	Missing	0
Mean		8,26
Median		9,00
Mode		9
Std. Deviation		1,231
Minimum		5
Maximum		9

FASILITAS

	Frequency	Percent	Valid Percent	Cumulative Percent
5	3	7,1	7,1	7,1
6	2	4,8	4,8	11,9
7	3	7,1	7,1	19,0
8	7	16,7	16,7	35,7
9	27	64,3	64,3	100,0
Total	42	100,0	100,0	

Histogram



Statistics

PENGAWASAN_SANKSI

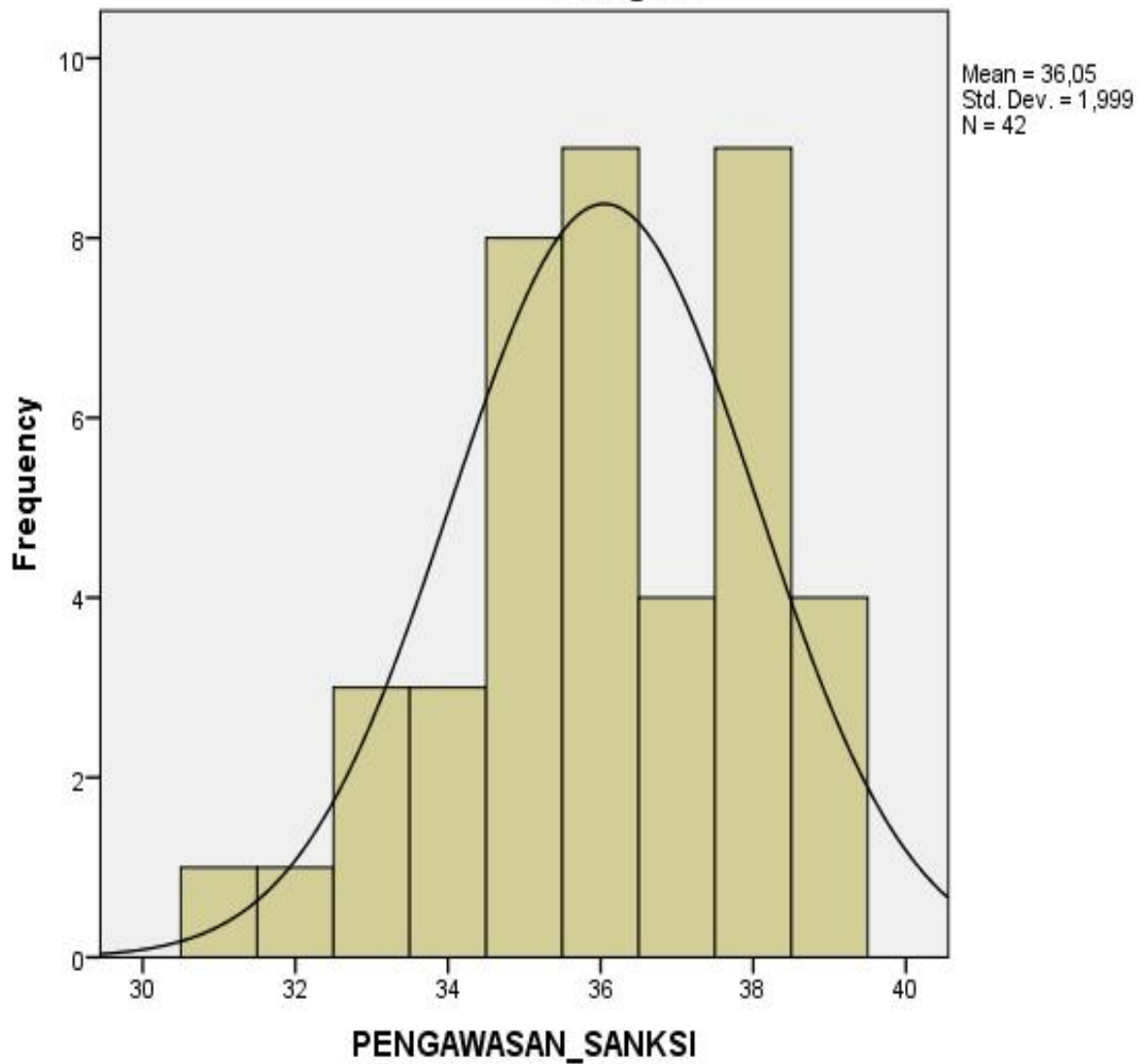
N	Valid	42
	Missin	0
	g	
Mean		36,05
Median		36,00
Mode		36 ^a
Std. Deviation		1,999
Minimum		31
Maximum		39

a. Multiple modes exist. The smallest value is shown

PENGAWASAN_SANKSI

	Frequency	Percent	Valid Percent	Cumulative Percent
Valid 31	1	2,4	2,4	2,4
32	1	2,4	2,4	4,8
33	3	7,1	7,1	11,9
34	3	7,1	7,1	19,0
35	8	19,0	19,0	38,1
36	9	21,4	21,4	59,5
37	4	9,5	9,5	69,0
38	9	21,4	21,4	90,5
39	4	9,5	9,5	100,0
Total	42	100,0	100,0	

Histogram



Statistics

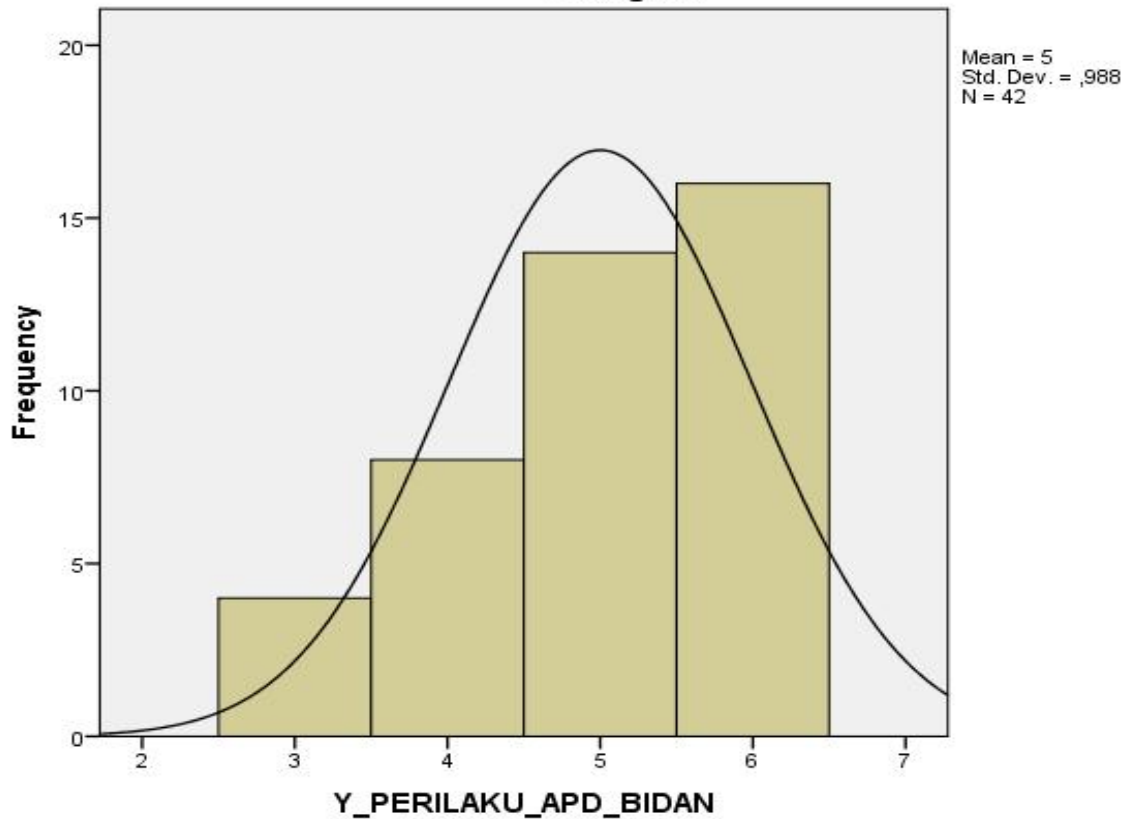
Y_PERILAKU_APD_BIDAN

N	Valid	42
	Missing	0
Mean		5,00
Median		5,00
Mode		6
Std. Deviation		,988
Minimum		3
Maximum		6

Y_PERILAKU_APD_BIDAN

	Frequency	Percent	Valid Percent	Cumulative Percent
3	4	9,5	9,5	9,5
4	8	19,0	19,0	28,6
Valid 5	14	33,3	33,3	61,9
6	16	38,1	38,1	100,0
Total	42	100,0	100,0	

Histogram



Statistics

		PERSEPSI	PENGETAHUA N
N	Valid	42	42
	Missing	0	0
Mean		17,40	42,62
Median		18,00	43,00
Mode		18	43
Std. Deviation		,857	1,481
Variance		,735	2,193
Skewness		-1,153	-1,048
Std. Error of Skewness		,365	,365
Range		3	7
Minimum		15	38
Maximum		18	45

PENGETAHUAN

	Frequency	Percent	Valid Percent	Cumulative Percent
38	1	2,4	2,4	2,4
39	1	2,4	2,4	4,8
40	1	2,4	2,4	7,1
41	5	11,9	11,9	19,0
Valid 42	8	19,0	19,0	38,1
43	14	33,3	33,3	71,4
44	10	23,8	23,8	95,2
45	2	4,8	4,8	100,0
Total	42	100,0	100,0	

PERSEPSI

	Frequency	Percent	Valid Percent	Cumulative Percent
15	1	2,4	2,4	2,4
16	7	16,7	16,7	19,0
Valid 17	8	19,0	19,0	38,1
18	26	61,9	61,9	100,0
Total	42	100,0	100,0	

